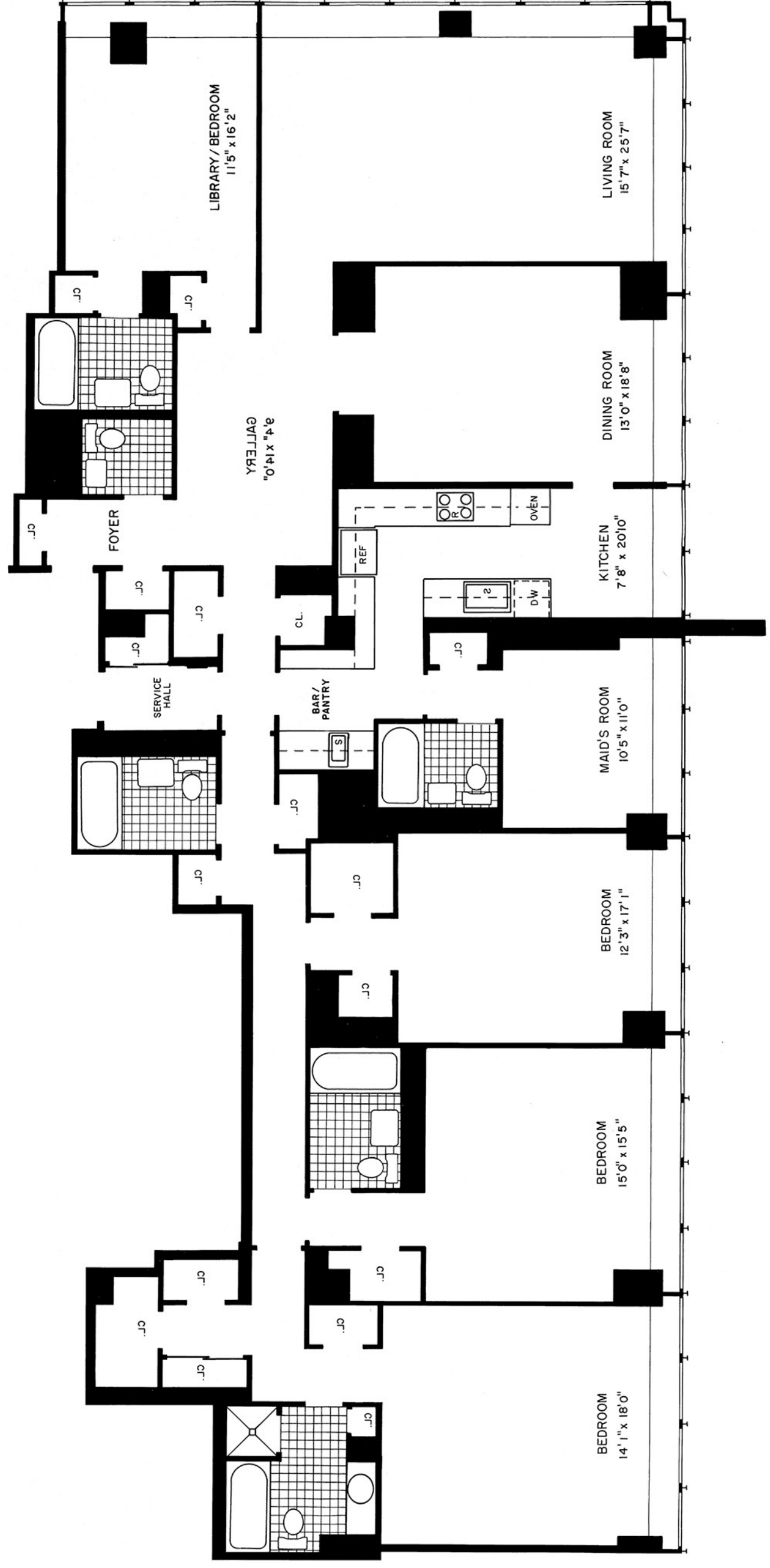
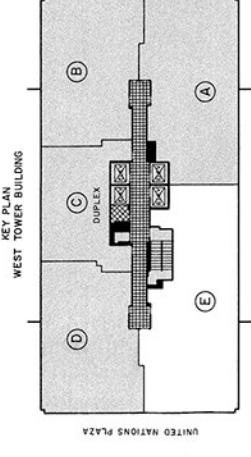




Apartment "E"
23rd through 30th floors / West Tower

Apartment "E" has eight rooms. Each of the four master bedrooms and the maid's room has its own private bath. If so desired, one bedroom, which opens off the central gallery, may be used as a library. The apartment offers southerly and westerly exposures, with wall-wide windows framing the UN's formal gardens and mid-Manhattan. The kitchen is over 20 feet long, and has a bar/pantry with its own sink adjacent. The apartment has a separate service entrance with connecting service hall. Among the 18 closets are a number of walk-in size. The powder room is off the entrance foyer.



Apartment E
23rd through 30th Floors/West Tower